

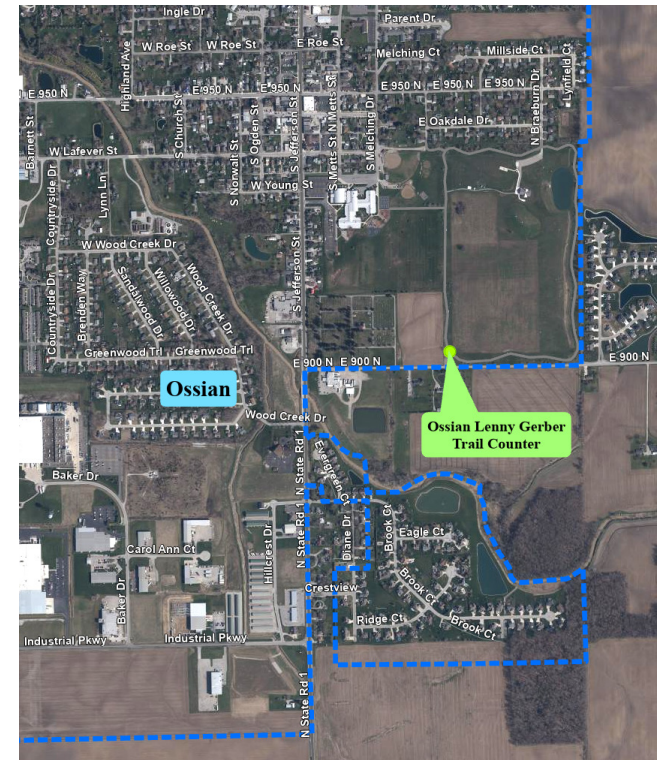
2025

Wells County Trail Counts

3rd Quarter (July through September)

- Bluffton Interurban Trail (Poka-Bache Connector) - SR 1 north of Sewage Place Drive
- Bluffton Rivergreenway (Poka-Bache Connector) - East of Orchard Ridge Drive
- Lancaster Park Trail (Poka-Bache Connector) - Southwest side of Lancaster Park
- Ossian Lenny Gerber Trail - Near E 900 N

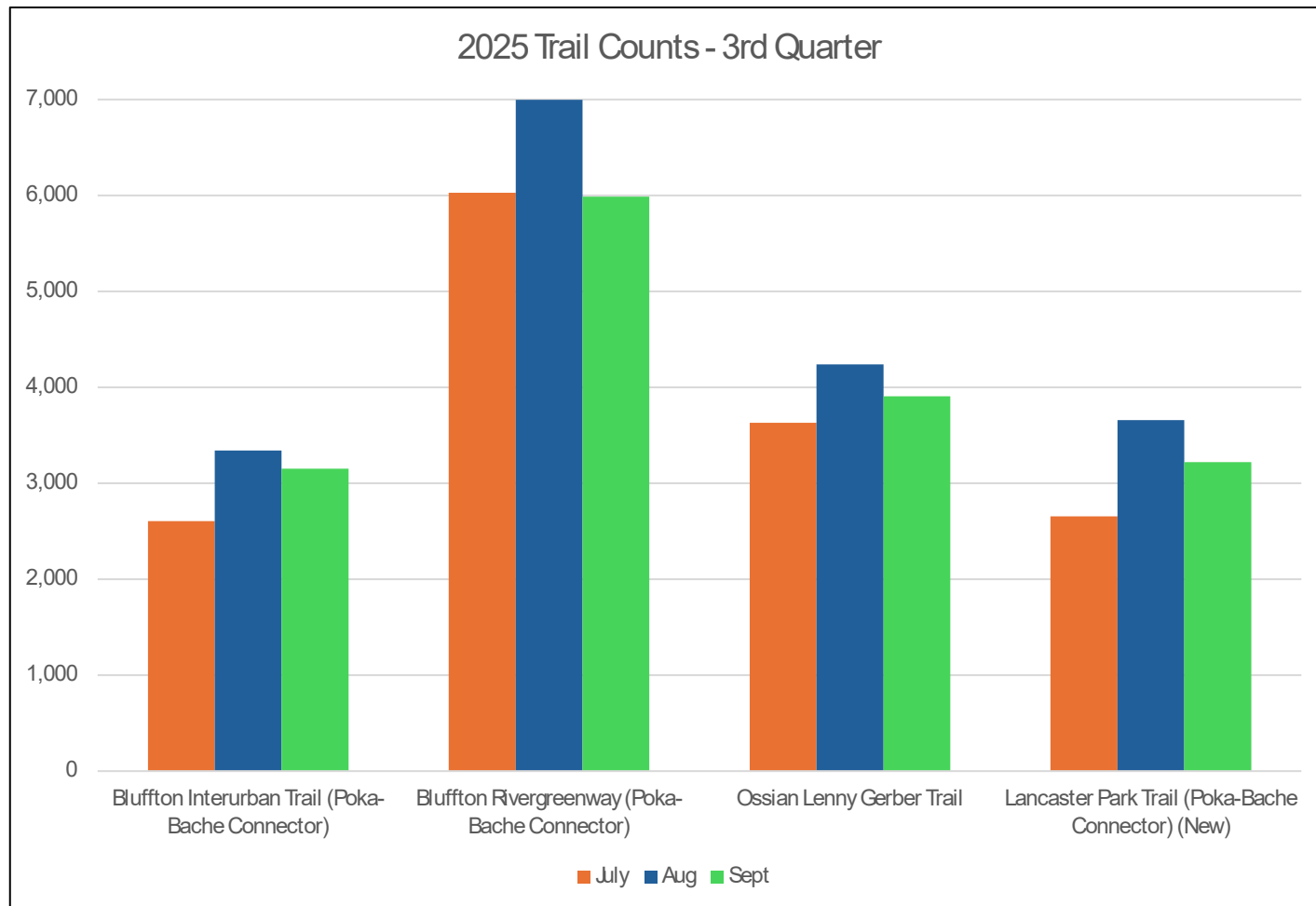
Produced by NIRCC



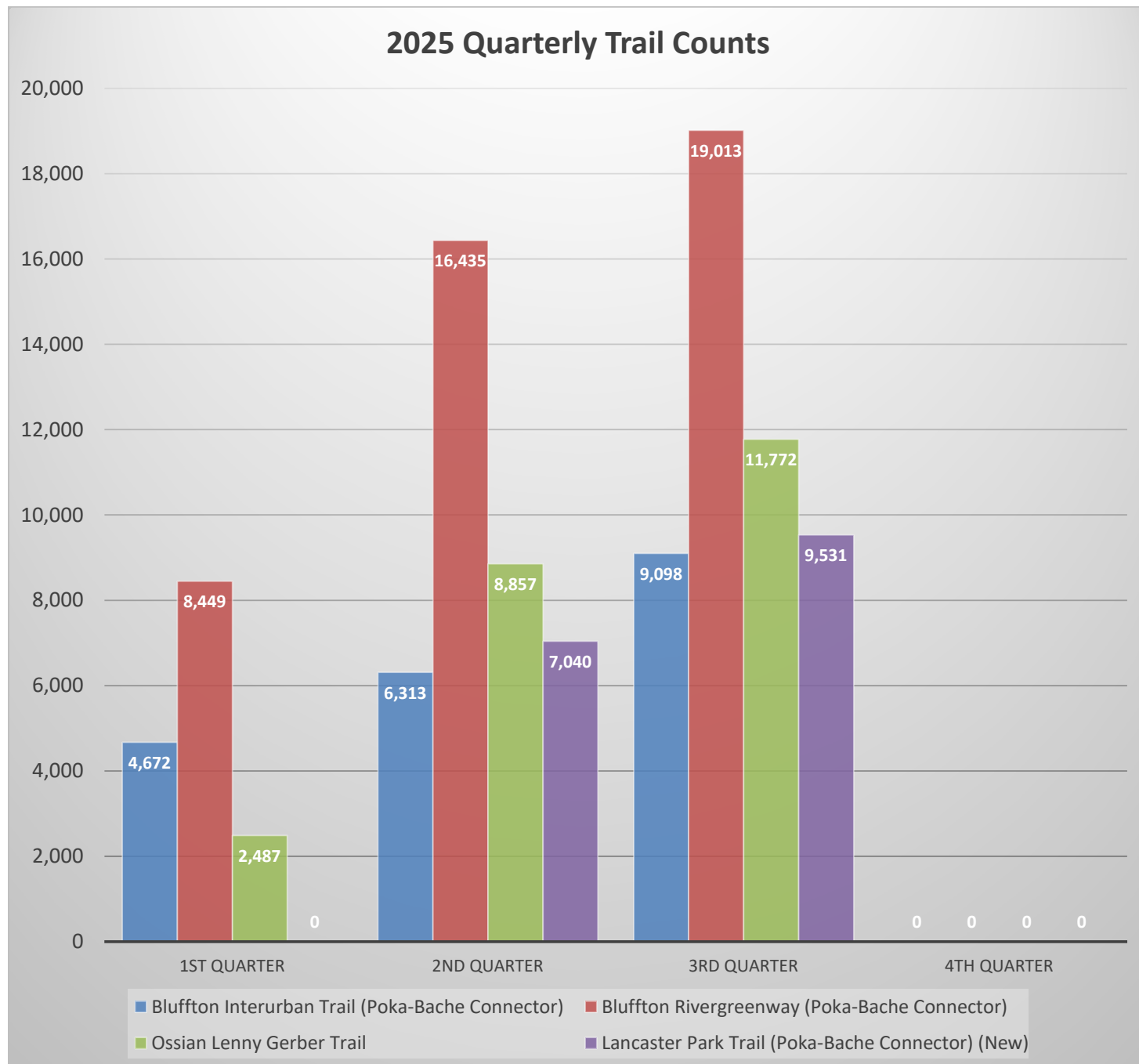
Wells County Trail Counts - 3rd Quarter

Wells County		2025	2025	2025	3rd Quarter 2025	% Change from
Year	Site	July	Aug	Sept	Counter Totals	last year*
2025	Bluffton Interurban Trail (Poka-Bache Connector)	2,604	3,342	3,152	9,098	-8.9%
	Bluffton Rivergreenway (Poka-Bache Connector)	6,027	6,998	5,988	19,013	1.0%
	Ossian Lenny Gerber Trail	3,629	4,238	3,905	11,772	2.1%
	Lancaster Park Trail (Poka-Bache Connector) (New)	2,655	3,657	3,219	9,531	No Data
Totals		14,915	18,235	16,264	49,414	
*Percent change from last year		-18.3%	9.3%	8.6%	-1.2%	

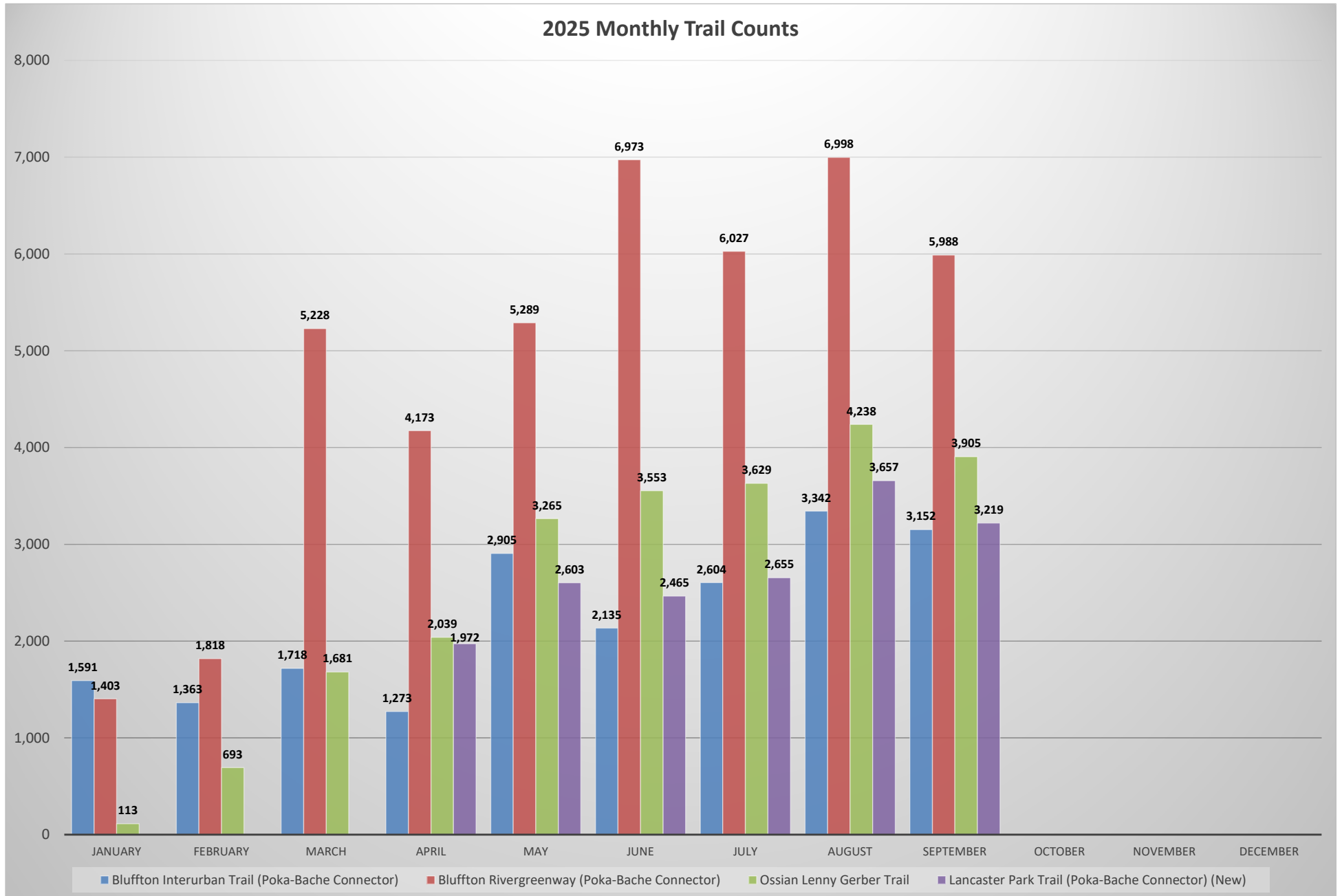
*The Lancaster Park Trail location was not used to calculate % change from last year's counts since it is a new location.



Wells County Trail Counts - Quarterly Trail Counts

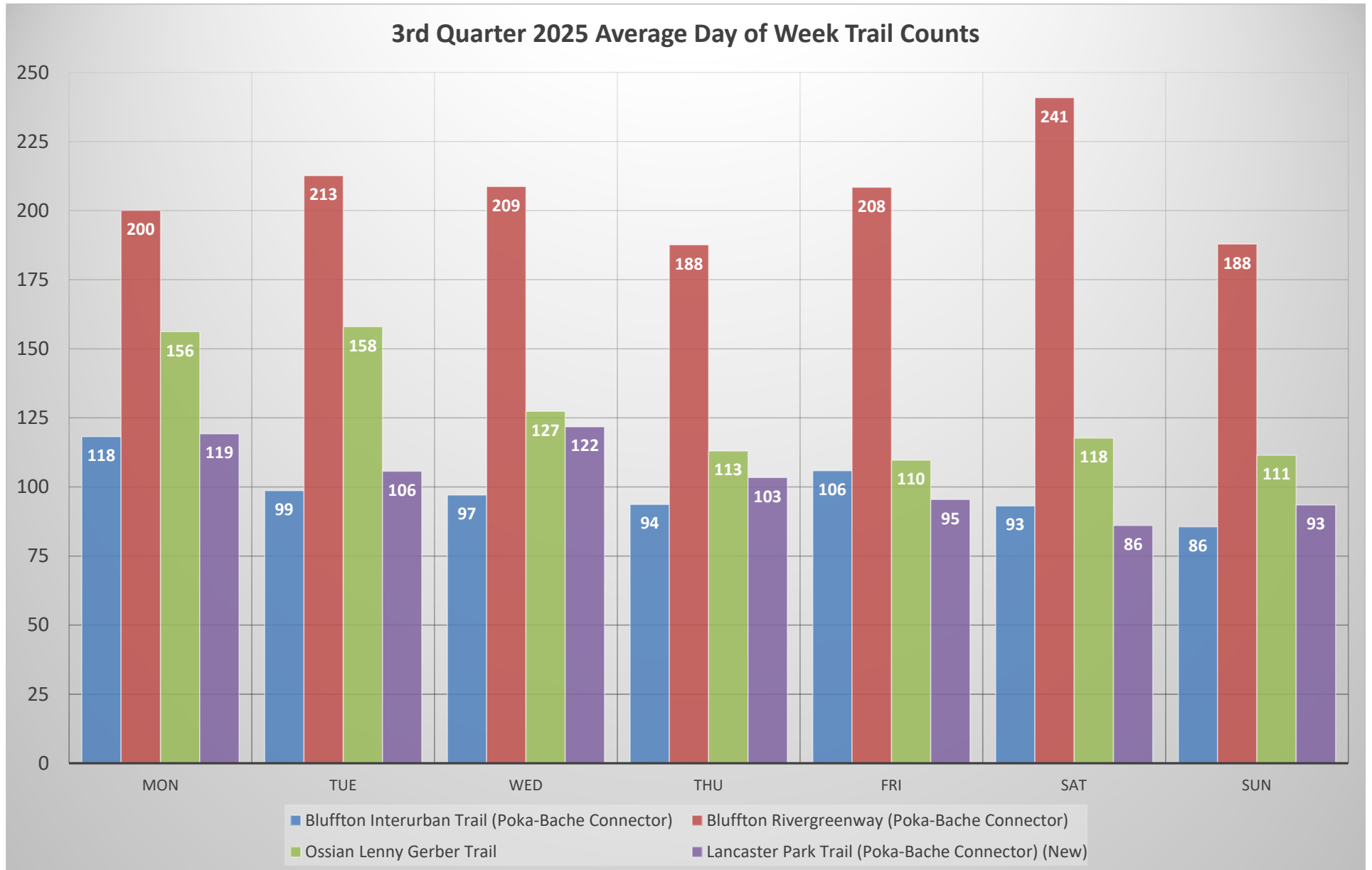


Wells County Trail Counts - Monthly Trail Counts



Wells County Trail Counts - 3rd Quarter

Average Trail Usage by Day of the Week



Wells County Trail Counts - 3rd Quarter

Average Trail Usage by Hour - Weekends vs Weekdays

