

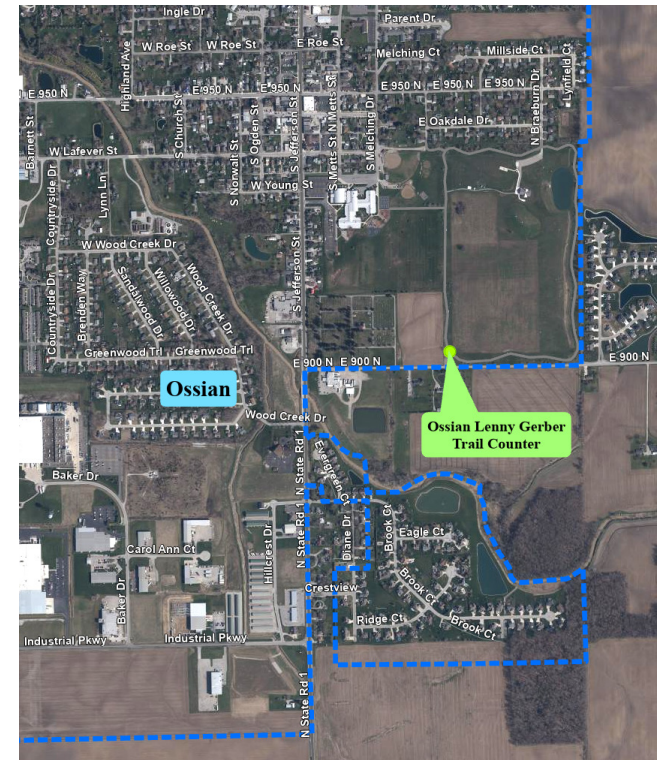
# 2025

## Wells County Trail Counts

### 2nd Quarter (April through June)

- Bluffton Interurban Trail (Poka-Bache Connector) - SR 1 north of Sewage Place Drive
- Bluffton Rivergreenway (Poka-Bache Connector) - East of Orchard Ridge Drive
- Lancaster Park Trail (Poka-Bache Connector) - Southwest side of Lancaster Park
- Ossian Lenny Gerber Trail - Near E 900 N

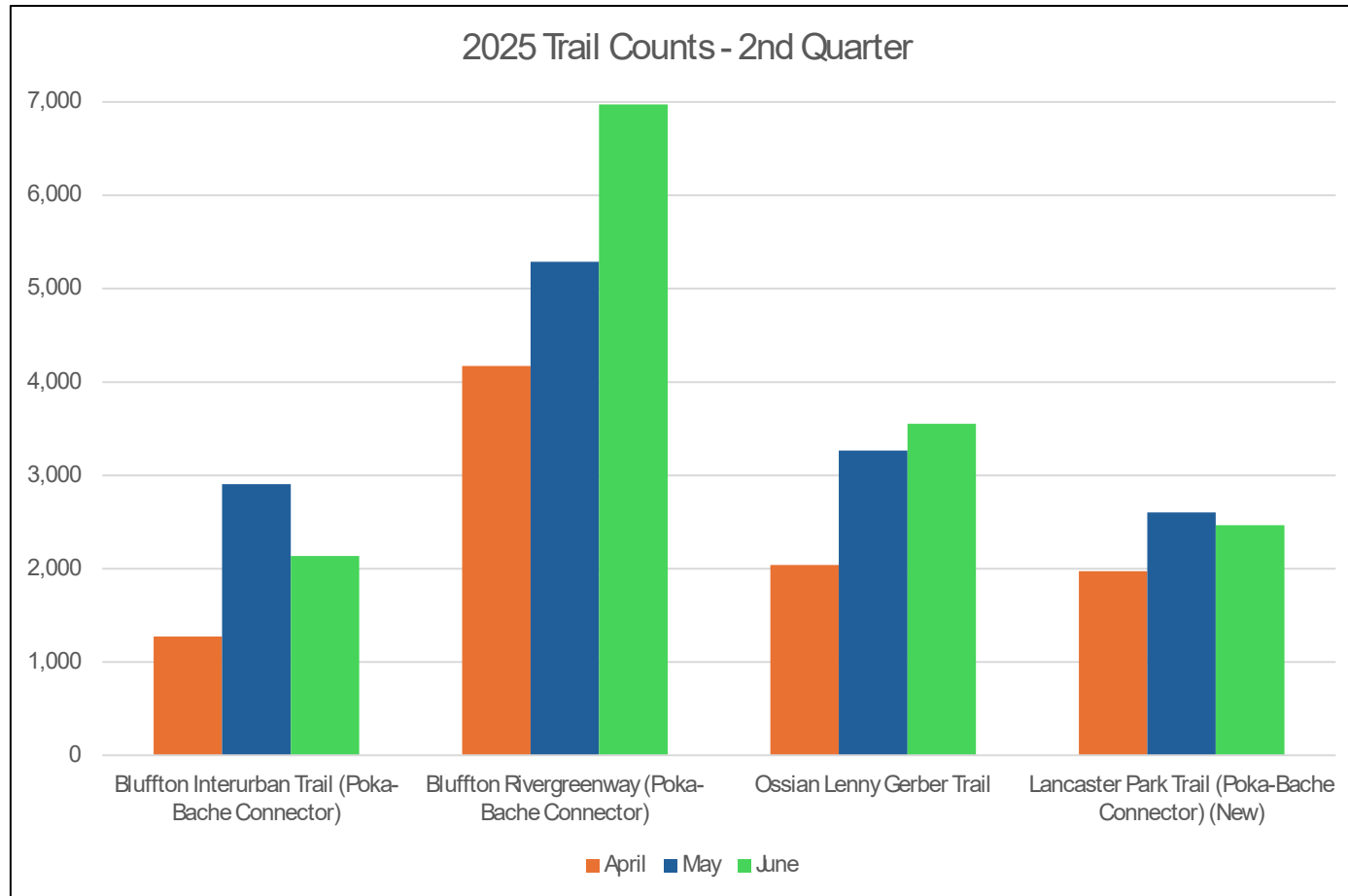
Produced by NIRCC



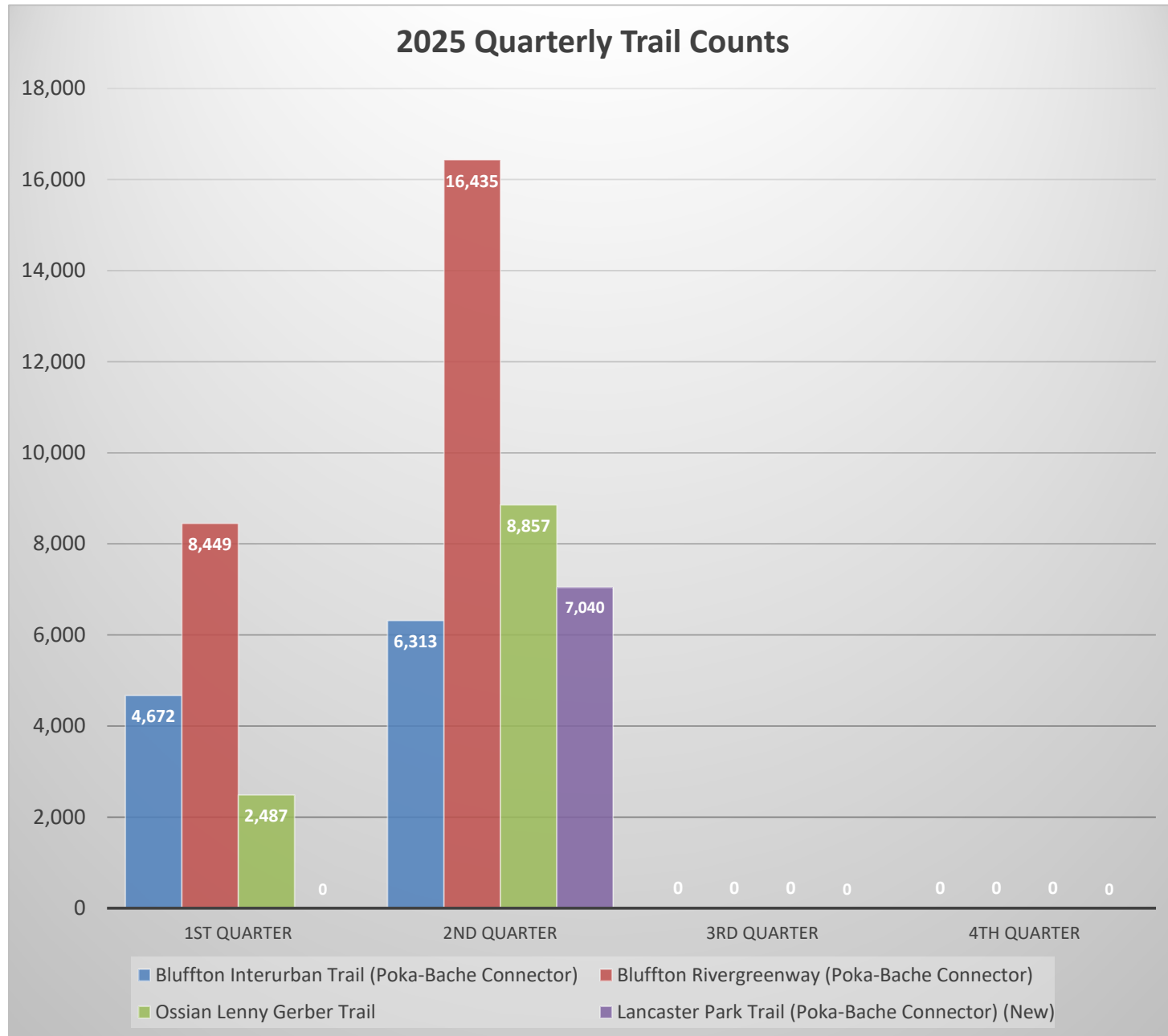
# Wells County Trail Counts - 2nd Quarter

Wells County		2025	2025	2025	2nd Quarter 2025	% Change
Year	Site	April	May	June	Counter Totals	from last year *
2025	Bluffton Interurban Trail (Poka-Bache Connector)	1,273	2,905	2,135	6,313	-32.0%
	Bluffton Rivergreenway (Poka-Bache Connector)	4,173	5,289	6,973	16,435	-9.3%
	Ossian Lenny Gerber Trail	2,039	3,265	3,553	8,857	-12.1%
	Lancaster Park Trail (Poka-Bache Connector) (New)	1,972	2,603	2,465	7,040	No Data
Totals		9,457	14,062	15,126	38,645	
Percent change from last year *		-13.3%	-25.2%	-6.4%	-15.7%	

\*The Lancaster Park Trail location was not used to calculate % change from last year counts since it is a new location.

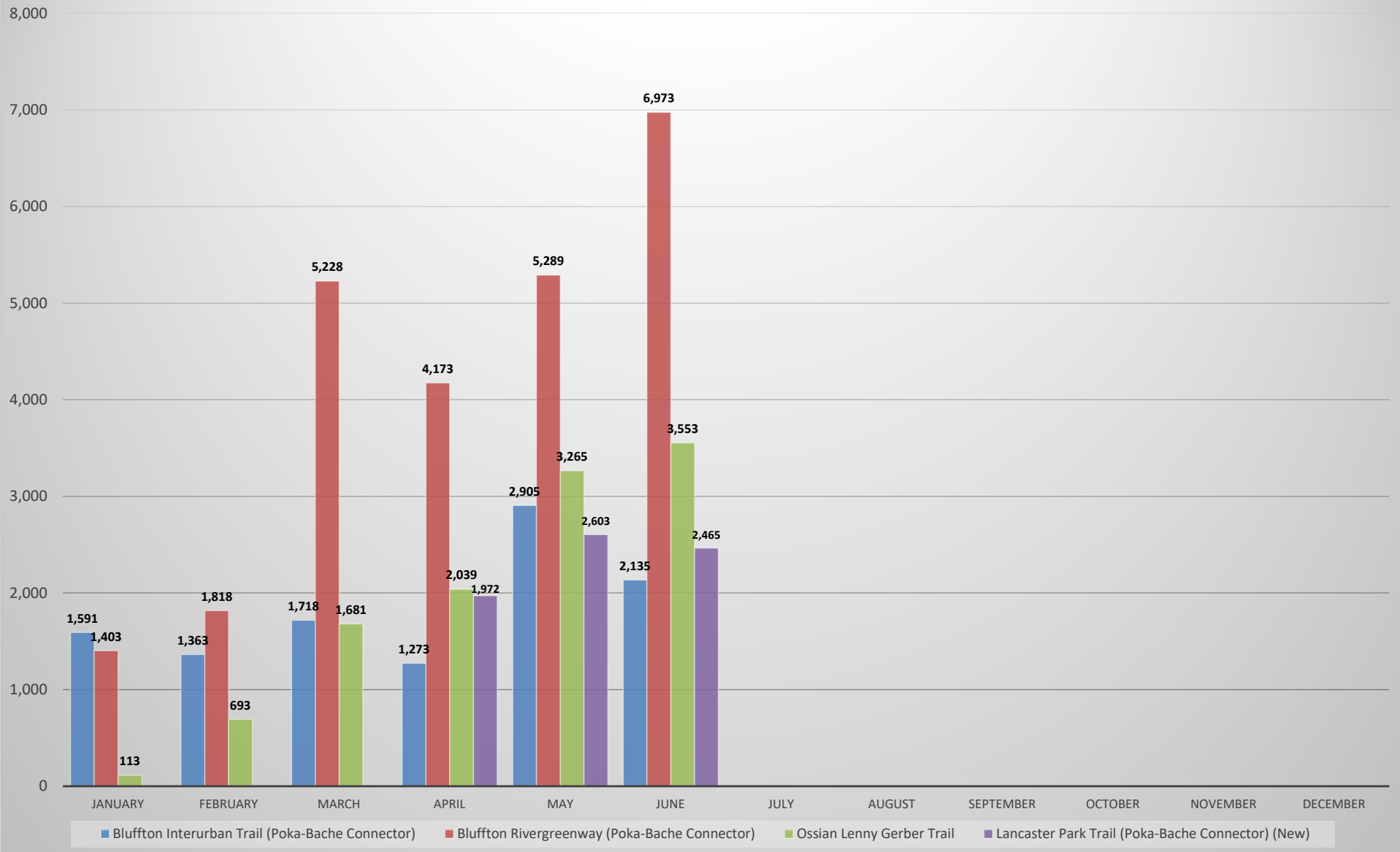


# Wells County Trail Counts - Quarterly Trail Counts



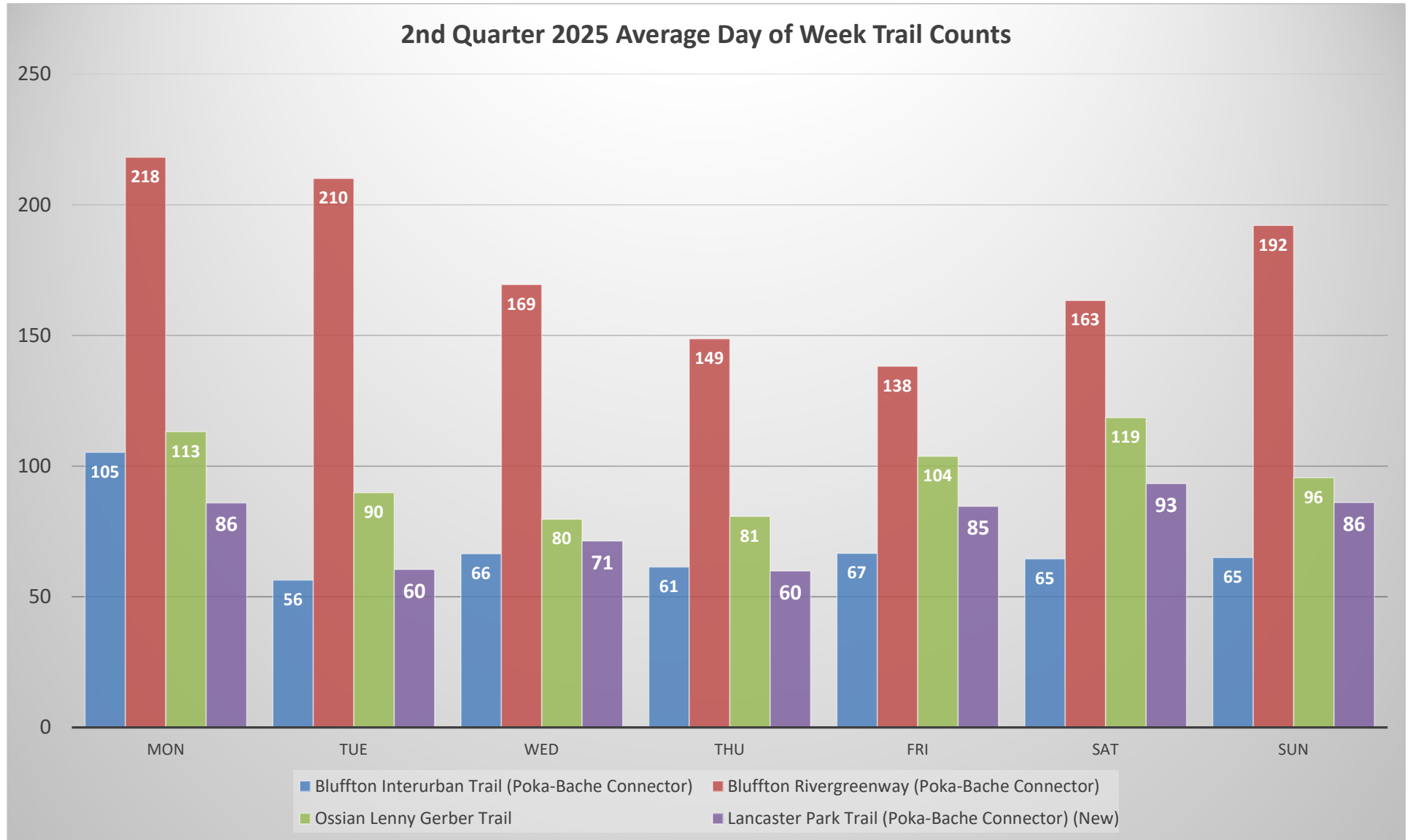
# Wells County Trail Counts - Monthly Trail Counts

2025 Monthly Trail Counts



# Wells County Trail Counts - 2nd Quarter

*Average Trail Usage by Day of the Week*



# Wells County Trail Counts - 2nd Quarter

## *Average Trail Usage by Hour - Weekends vs Weekdays*

